

## Used: 205MW SIEMENS(SGT-800) COMPLETE COMBINED CYCLE POWER PLAN

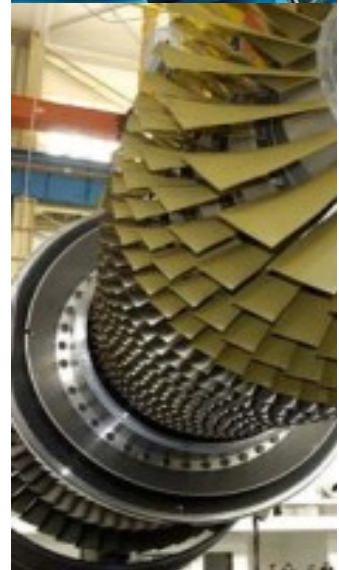
### DESCRIPTION OF POWER PLANT

The Power Plant is composed of 3 nos of Gas Turbines (Siemens SGT-800) and 1 no of Steam Turbine (Siemens SST-900), 3 nos of HRSG (Aalborg-Denmark), 1 no of ACC (SPX-Belgium), 1 no of RMS station, HV switchyard and BOP equipment.

The generated electricity is transmitted to high voltage Switchyard through 28 km of 154 kV 2x1272 MCM overhead transmission line.

The plant was commissioned as simple cycle in August 2012 and as combined cycle in June 2013.

Installed Capacity	: 205 MW
Energy Production Capacity	: 1640 GWh/year
Commission Date	: 16.06.2013
Configuration	: 3 X SGT – 800 GT + 1 x ST
Total Gross Efficiency / Net Efficiency	: 55% / 53.6%

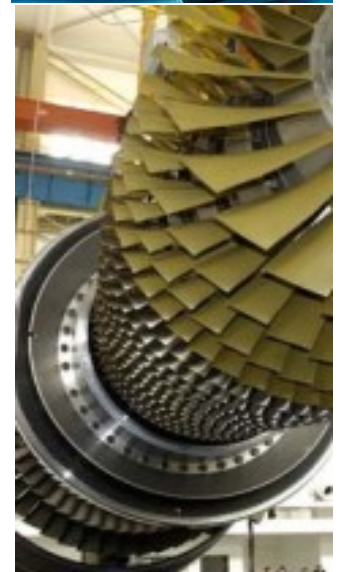
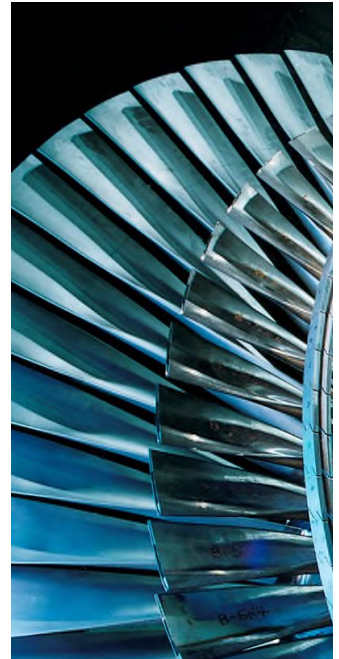


	<b>GT 1</b>	<b>GT 2</b>	<b>GT 3</b>	<b>SST900</b>
<b>Operational Hours since COD</b>	15197	14762	15452	17399
<b>Number of Start Stops</b>	915	929	822	849
<b>Equivalent Hours</b>	21085	21489	22034	9801
<b>EOC</b>	1177	1345	1316	
<b>Operational Hours after B Inspection</b>	2547	2493	2582	2613
<b>Number of Start Stops after B Inspection</b>	218	223	238	262

Used: 205MW SIEMENS (SGT-800) COMPLETE  
COMBINED CYCLE POWER PLAN

---

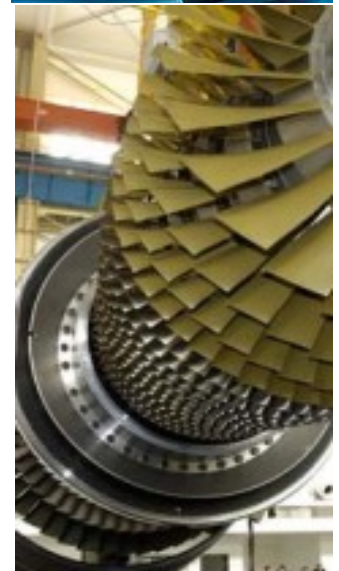
**Photo Power Plan**



Used: 205MW SIEMENS (SGT-800) COMPLETE  
COMBINED CYCLE POWER PLAN

---

**Photo Power Plan**



## Used: 205MW SIEMENS (SGT-800) COMPLETE COMBINED CYCLE POWER PLAN

---

- Price : Price on request
- Location : Europe
- YOM : : 2012
- Running Hours: appr. 15.000,- EUR
- Condition : like new
- Warranty : yes possible

For transportation and erection we can recommend you experienced companies, if you are in need of. These costs are in addition to the purchase price.

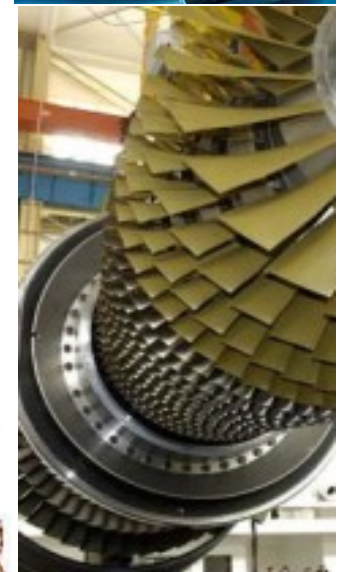
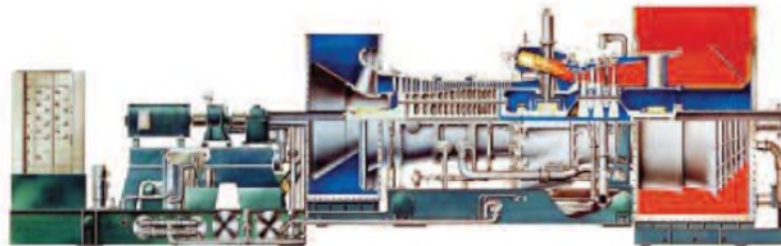
If you are interested, we need a Letter of Interest, a Proof of Funds, a confirmation of our commission, and the name of the country of destination.

After that, and a NCNDA, you will get further information, and we can arrange a visit (inspection) at the place of storage.

If you agree, I will send you the address of the owner. So you can communicate with the owner of the power plant or communicate via e-mail.

We look forward to your reply

Karl Steiner



### Important Disclaimer

Although the statements and technical information contained herein are believed to be materially accurate as of the date hereof, no representation or warranty is given as to the accuracy of any of the information provided.

This document contains confidential information intended only for the use of the addressee. If you are not the intended recipient of this information then you are hereby notified that any use, dissemination, distribution or reproduction of this message is prohibited.